

# SSCAR Safety Sensitive Edge System

## 1 Safety Sensitive Edge Control specifications



**SSCARE10**  
Safety Sensitive Edge Control



**SSCARG06**  
Security Safety Sensitive Edge



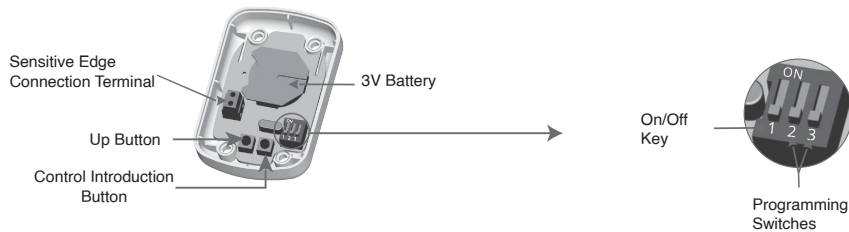
**SSCARG07**  
Magnetic Sensor

Supply Voltage: 3V, 1 Adet CR2430 Battery  
Transmitter Frequency: 433,92 Mhz  
Transmitter Power: 10 mw  
Operation Temperature Output: -20C°+ 55C°  
Outdoor Operating Distance: Indoor 35 meter

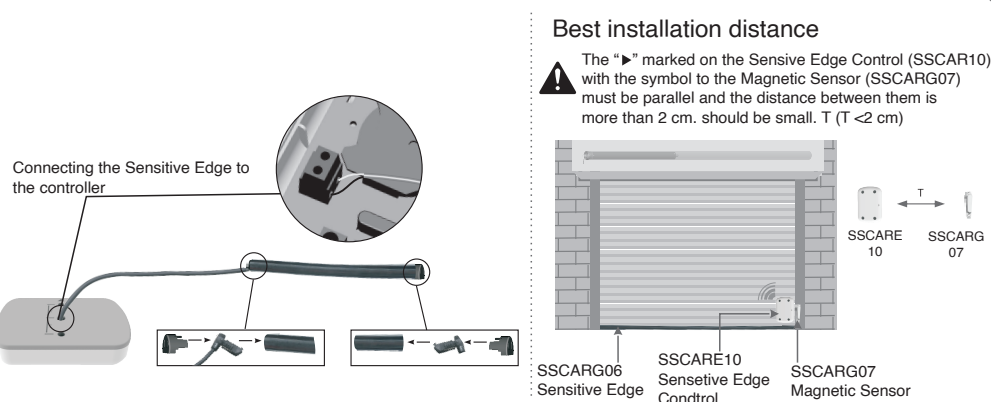
**Note 1:** Make sure to energize the sensitive edge controller and introduce the controller to the receiver unit.

**Note 2:** Make sure that the system opens up when you press the "Up" button on the sensitive edge control.

## 2 Internal structure of Sensitive Edge Control



## 3 Setup

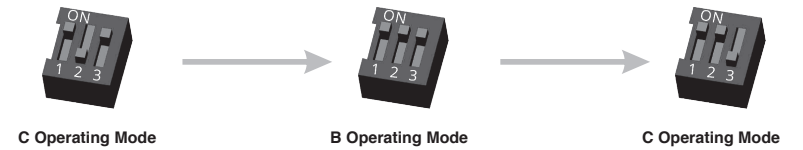
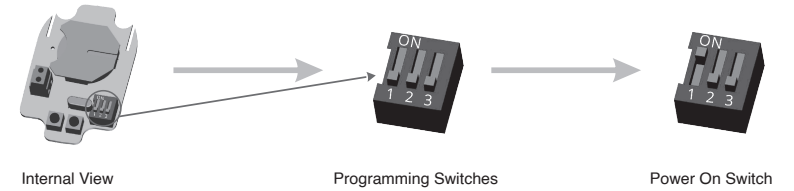


## 4 Mode Selection

**!** The Safety Sensitive Edge Control System has three different operating modes. You can choose between A, B, C modes with a 3-dip switch..

**Operation Modes :**

- **A Operating Mode:** stops when the edge is touched.
- **B Operating Mode:** stops when the edge is touched and rewinds half a turn.
- **C Operating Mode:** stops when the edge is touched and opens up to the upper limit point.



**!** \*When an obstacle is encountered while closing the shutter;

- **A Operating Mode:** The shutter stops suddenly.
- **B Operating Mode:** The shutter stops and goes up half a turn.
- **C Operating Mode:** The shutter stops and opens up to the upper limit point.

