



[www.cuppon.com.tr](http://www.cuppon.com.tr)

# **CMZ SERIES ROLLING SOOR OPERATOR**

# OUTLINE

1. Important safety information .....	1
2. Main technical parameters .....	1
3. Introduction .....	2
4. Installation and adjustment .....	2
5. Electrical .....	6
6. Maintenance .....	6
7. Troubleshooting .....	7
8. Packing list .....	7

## 1. Important safety information

Carefully read and follow all safety precaution and warnings before attempting to install and use rolling door operator, incorrect installation can lead to severe injury.

- The rolling door operator should be installed by a qualified technician; otherwise, serious personal injury or property damage may occur.
- Notify the users that the door operator is never to be operated unless it is in full view.
- Keep remote controls away from children, to prevent the door from being activated involuntarily.
- Before any job on the door operator, cut out electrical power.
- DO NOT in any way modify the components of the rolling door operator, otherwise serious personal injury or property damage may occur. We do not accept responsibility for damage or injury resulting from installing this door operator.
- When opening or closing the door, do not attempt to walk or drive through the door.
- The rolling door operator must be grounded.
- DO NOT pull the hand chain or release lever during opening or closing the door.
- DO NOT closing the door by pulling the release lever as normal working mode, otherwise, serious personal injury or property damage may occur. (It\*s only an emergency mode)
- Regularly check the rolling door operator. If you have any problem, please contact our sales agent.
- Our company reserves the right to change the design and specification without prior notification.
- Please install the motor as these instructions. Or else, our company won't be responsible of any damage about motor

## 2. Main technical parameters

Table 1

Model	Input power (V)	Output torque (N.m)	Max. lift (kg)	Rotate speed (r/min)	Max. operating range(high :m)	Roll ( inch)	Chain (ANSI standard)
AC-2001P	220	110	200	5.3	5	4"	08B
AC-3001P	220	160	300	7.9/6.2	6	4"/5"	08B/10A
AC-5001P	220	410	500	6.5	6	5"	10A
AC-6001P	220	410	600	6.5	6	5"	10A
AC-8001P	220	640	800	3.7	9	6"	10A
AC-10001P	220	710	1000	5.5	9	6"	12A
AC-6003P	380	410	600	6.5	6	5"	10A
AC-8003P	380	850	800	5	9	6"	10A
AC-10003P	380	870	1000	5.5	9	6"	12A
AC-13003P	380	1400	1300	6.4	9	8"	12A
AC-15003P	380	1600	1500	4.9	9	8"	16A
DC-300kg	220	160	300	5.4	6	5"	10A
DC-500kg	220	340	500	5.7	6	5"	10A
DC-750kg	220	600	750	5.2	9	5"	10A

Note: the 'Max. lift' listed above is not the max. door weight, and the door weight should less than 'Max. lift'. Wind load resistance, guide and door resistance and other factors must be taken into account

### 3. Introduction

#### Main features

- Compact design, attractive appearance, safe and reliable performance.
- It has the advantages of light weight, low noise, convenient to install, safe and reliable performance.
- Manual operation in case of power failure.

#### Main structure (see Fig.1)

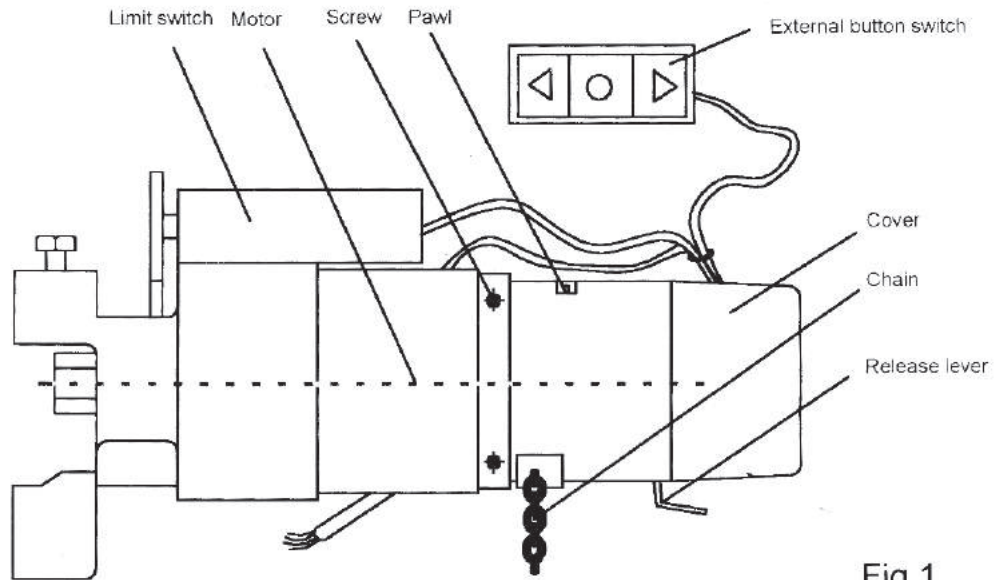


Fig.1

### 4. Installation and adjustment

#### Right hand and left hand installation

You may install the rolling door operator to left or right side. Operator is normally delivered right hand. (View from inside the opening), If you need to change it to the left processed as follows: undo the four screws on the housing, then turn the upper housing 180° and ensure the chain hangs vertically, finally tighten the screws. Make sure there is no clearance between upper housing and lower housing. If the operator has pawl (see Table 3), turn the pawl 180° at the same time.

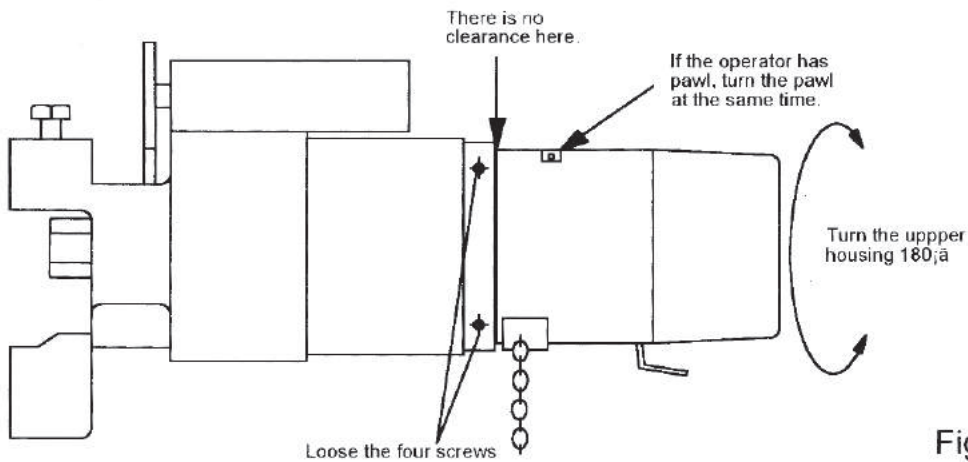


Fig.2



**Install the rolling door operator to right side.**

Right side sprocket bracket

Install the sprocket bracket on the wall or wall bracket horizontally, if the distance is not sufficient the bracket angle may need to be adjusted (The installation angle can be adjusted to between 0° and 44°, ensure the chain hangs vertically.)

Mounting size (see Fig.3 and table 2)

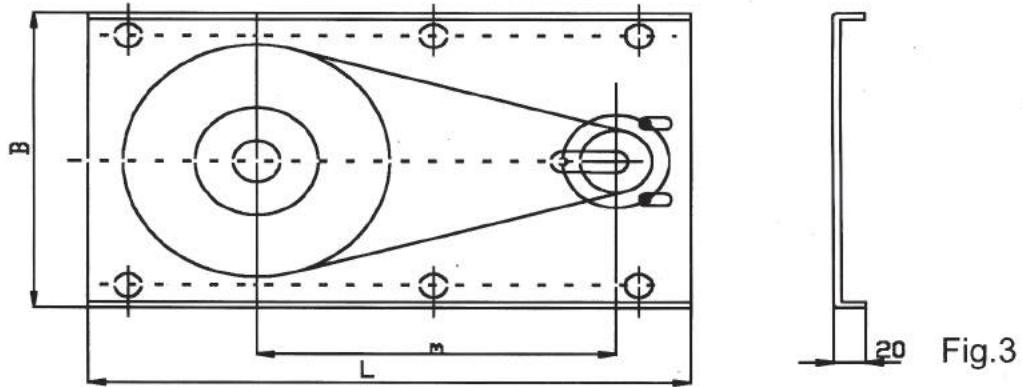


Table 2

Model	Center distance (m)	Length (L)	Width (B)
AC-2001P	295	490	220
AC-3001P AC-5001P DC-300kg	304	515	300
DC-500kg DC-750kg	304	530	320
AC-6001P/6003P	304	515	300
AC-8001P/8003P	345.5	580	320
AC-10001P/10003P	339	600	360
AC-13003P	364	550	250
AC-15003P	364	550	250
AC-3001P AC-5001P	304	540	320
DC-300kg DC-500kg	304	540	320
AC-3001P AC-5001P	254	530	360

Left side square plate

Solder the bearing bracket on the square plate as shown in Fig.4. Fix the square plate on the wall or wall bracket.

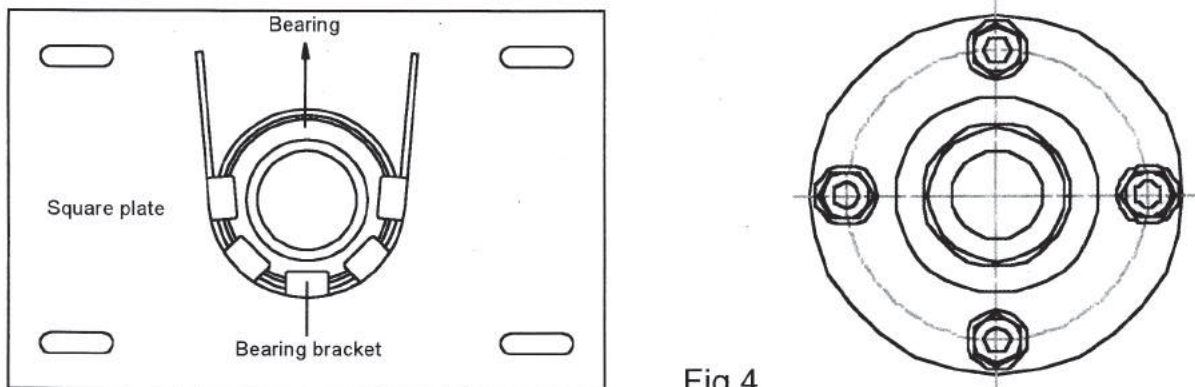


Fig.4

### Roller installation

Install the roller as shown in Fig.5.

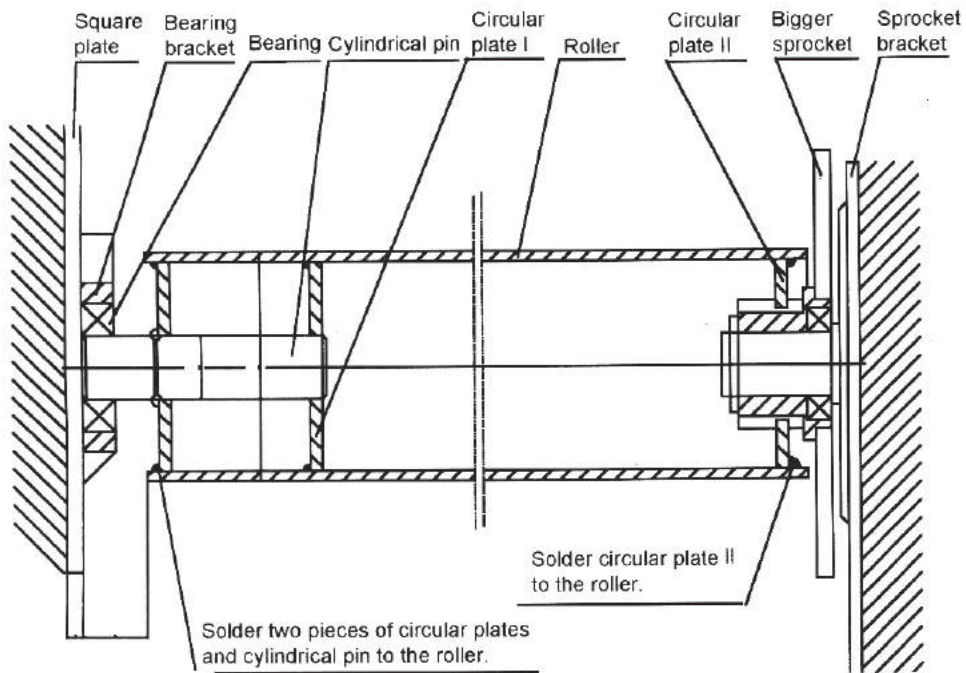


Fig.5

### Door operator

Fix the door operator to the sprocket bracket. Make sure that the nuts are securely tightened and chain hangs vertically.

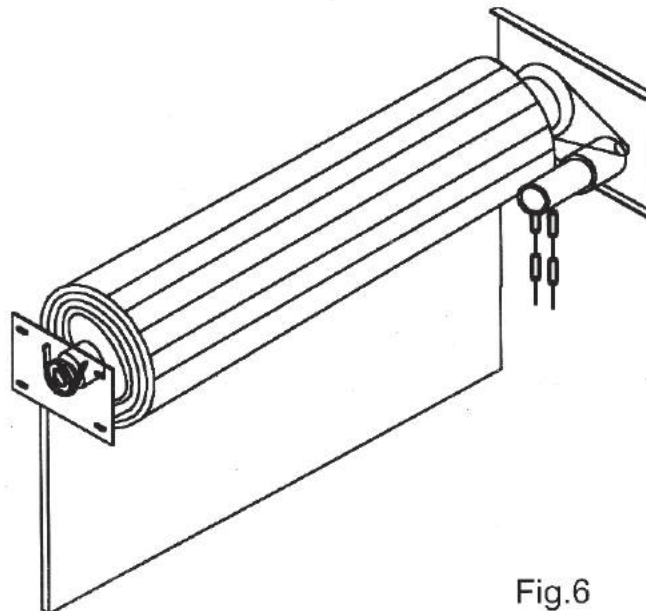


Fig.6

### Limit switch see Fig.7

Limit switches are needed to stop the door at the correct opened and closed positions.

Rotate the screw to free the limit cam wheel, open the door to desired position, turn the limit cam wheel until OPEN limit switch clicks, finally tighten the screw.

Rotate the screw to free its limit cam wheel, close the door to desired position, turn the limit cam

wheel until CLOSE limit switch clicks, finally tighten the screw.

After adjusting, you can open the door then close the door and observe whether the door has successfully reached the opened and closed positions. If the door does not reach the opened or closed position, fine adjust the limit cam wheel to suit the desired distance. The process is the same as the adjusting as above.

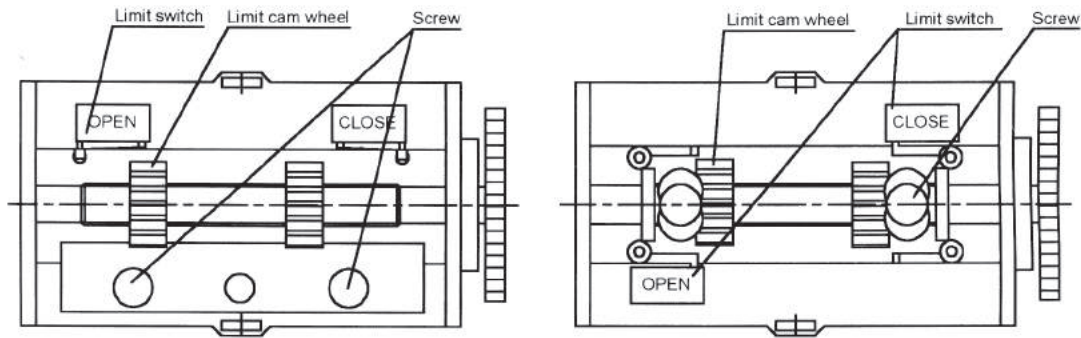


Fig.7

### Chain

In case of power failure, you can open or close the door manually by pulling the hand chain. It is important to ensure that the chain is not fitted twisted. If the chain is twisted, malfunctions may occur when the hand chain is used.

Please do not pull the chain during closing or opening the door, otherwise, serious personal injury or property damage may occur. Do not pull the chain too hard, otherwise the chain components will be damaged.

If the operator have pawl see Fig.1, the chain can only be pulled in one direction to open the door, pull the release lever to disengage the door quickly (**warning: when pulling the release lever to disengage the door, do not attempt to go through the gate**). If the operator is not equipped with a pawl, the chain can be pulled in two directions to open or close the door.

Table 3

Model	Pawl	Chain
AC-2001P AC-3001P AC-5001P	No	Pull in two directions
DC-300kg / 500kg/750kg	No	Pull in two directions
AC-6001P / 6003P	No	Pull in two directions
AC-8001P / 8003P	Have	Pull in one direction
AC-10001P / 10003P	Have	Pull in one direction
AC-13003P	Have	Pull in one direction
AC-15003P	Have	Pull in one direction

### Release lever

Pull the release lever to disengage the door quickly.

**WARNING: When pulling the release lever to disengage the door, do not attempt to walk or drive through the door. Otherwise, serious personal injury or property damage may occur.**



## 5. Electrical

Install the rolling door operator to right side, wiring see Fig.8

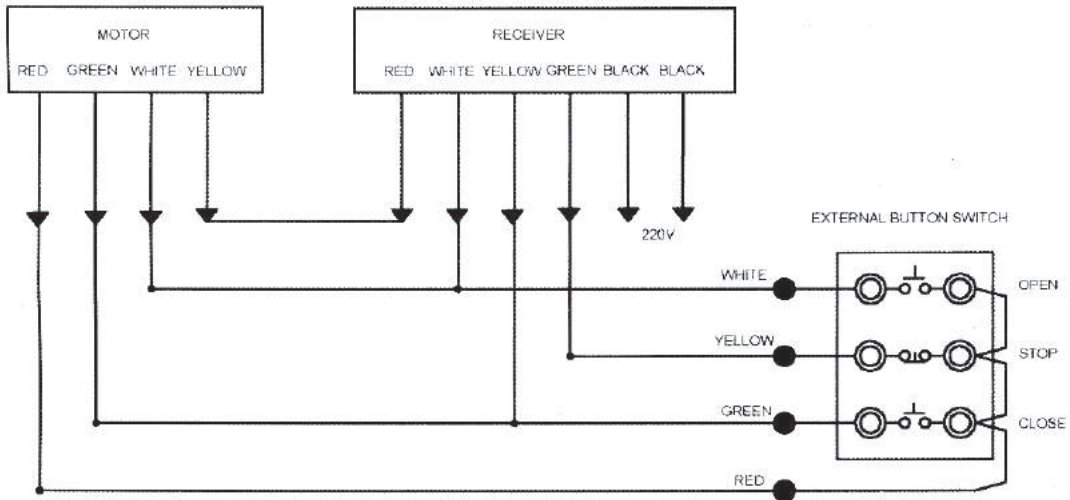


Fig.8

External button switch (see Fig.9)

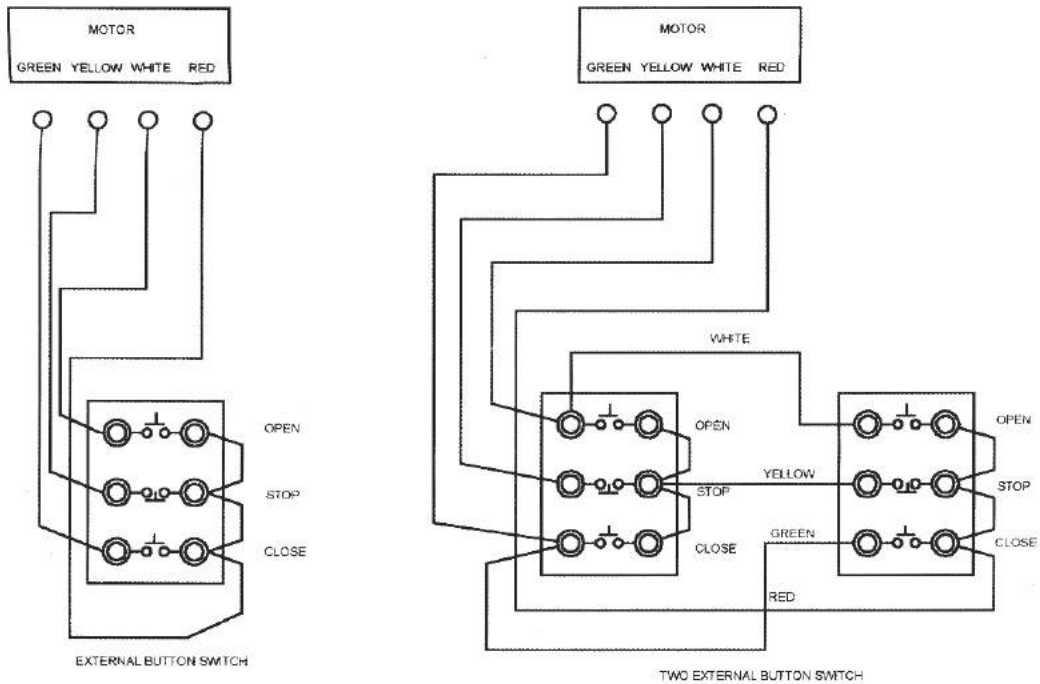


Fig.9

The rolling door operator must be grounded, connect grounding wire to the sprocket bracket.  
 If the door running direction is wrong, exchange phase wires.

## 6. Maintenance

Check the door once a month. The door must be in good working order.  
 Regularly check the limit switch.



For service, call an experienced technician.

Our company reserves the right to change the design and specification without prior notification.

### 7. Troubleshooting

Table 4

Problem	Possible causes	Remedy
Door fails to stop in desired position.	Limit switch	Replace the limit switch or check the wiring.
Motor only runs in one direction.	Low voltage	Check the power supply.
The operator fails to run if press the external button switch.	Pool contact Electromagnet	Replace the button switch or check the wiring.
The operator fails to stop if press the stop button.	Relay	Replace the relay.
After stopping the door, the door creeps down.	Brake block in the operator wears off.	Check the compressed spring in the operator, add spacer if necessary.

### 8. Packing list

After receiving the control box, you should make an unpack-inspection, in which you should check whether the product was damaged. If you have any problem please contact our sales agent. You should find the following items in our standard packing:

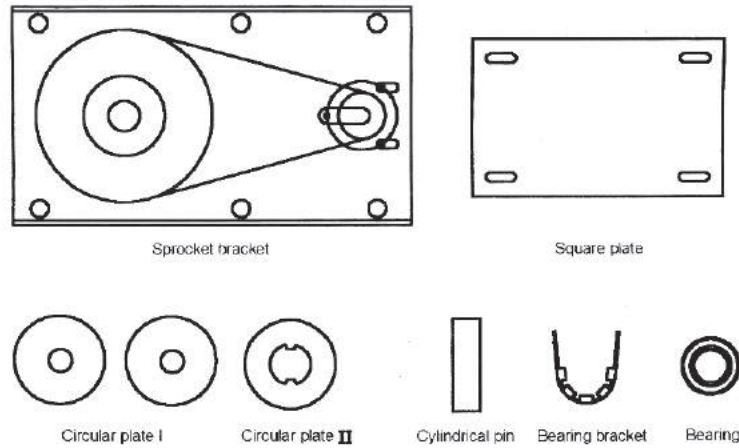
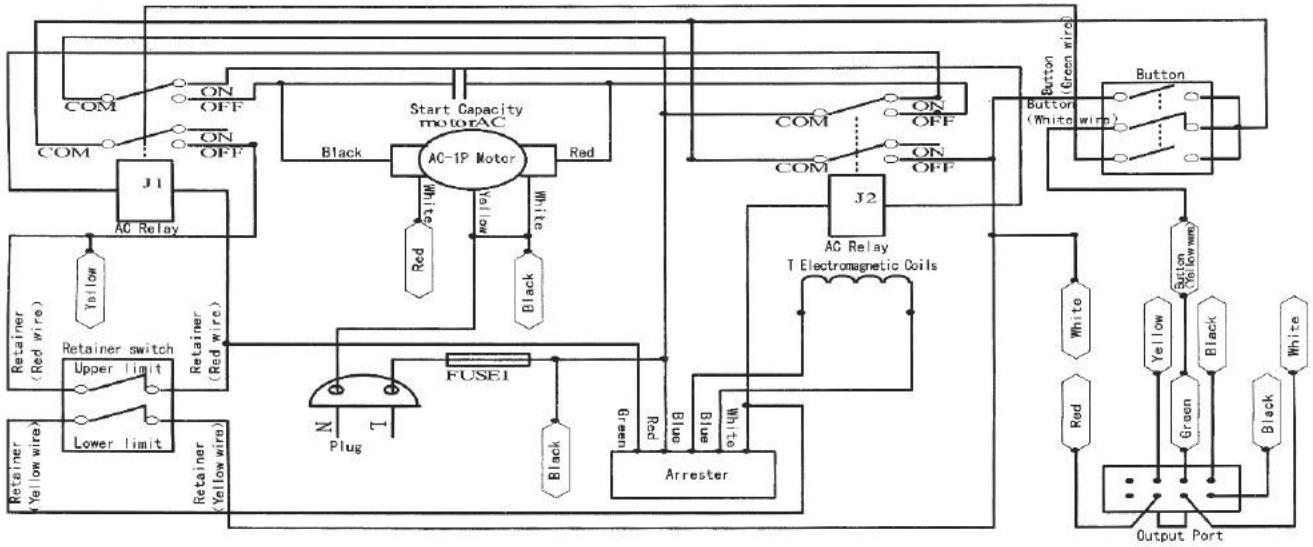


Fig.10

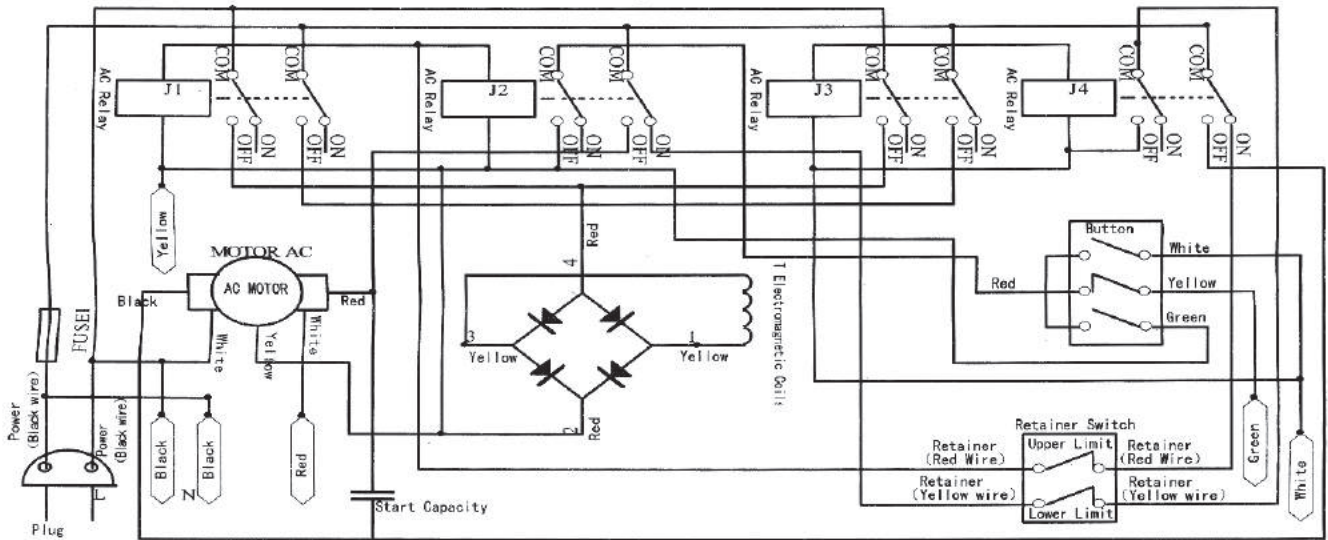
Table 5 packing list

NO.	Item	Quantity
1	Motor	1
2	External button switch	1
3	Key	2
4	Sprocket bracket	1
5	Square plate	1
6	Circular plate I	2
7	Circular plate II	1
8	Cylindrical pin	1
9	Bearing bracket	1
10	Bearing	1
11	Chain	1
12	Chain wheel	1

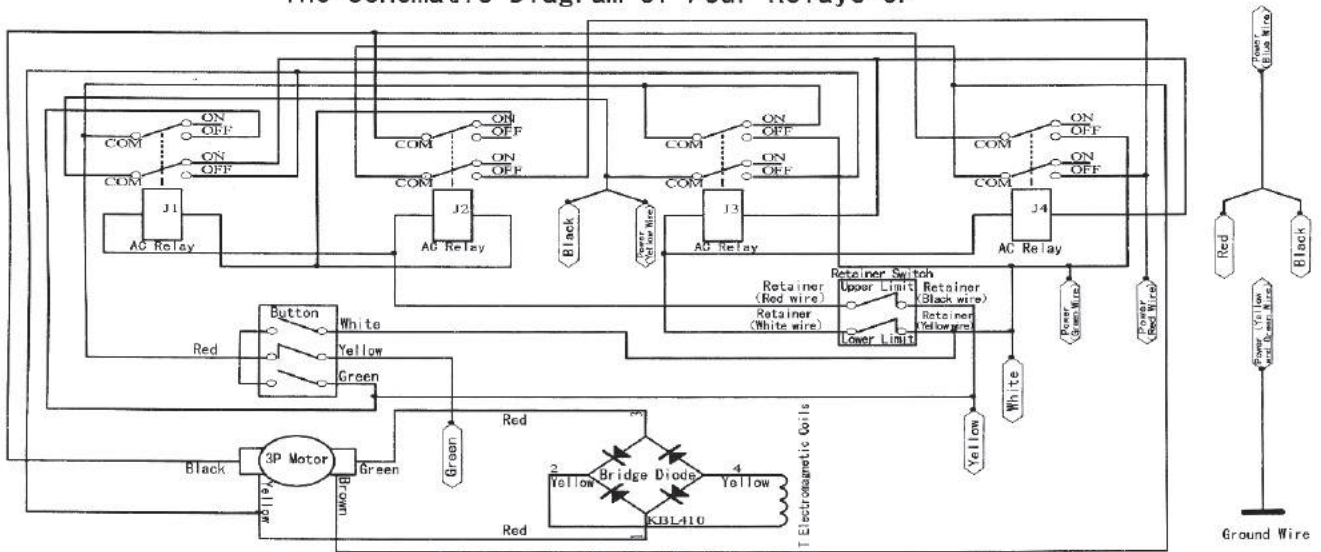
The schematic diagram of Two Relays 1P



The Schematic Diagram of Four Relays 1P



The Schematic Diagram of Four Relays 3P



(The schematic diagram subject to change without notice.)



[www.cuppon.com.tr](http://www.cuppon.com.tr)