

1 Technical support

1. One motor maximum can store 20 emitter channels.
2. power

CM35(45)E tubular motor



Rebound single-channel switch

One tubular motor maximum can store 20 emitter channels, over 20 channels, if add new channels, it will cover the 20th channel.

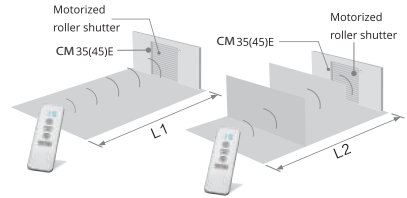


• Please set the limit position before use.

2 Control range



• Effective transmitting distance may have deviation due to actual environment.



Voltage	L1 open	L2 par lition	% Emission frequency
230V/50Hz	200m	35m	433.92MHz

3 Motor function

E:Electronic

Electronic limit + Built-in receiver + The third limit point setting



CM35(45)E tubular motor

4 Matchable emitter



SGM-1
Single Channel
Emitter

SGM-2
2-Channel Emitter

SGM-6
6-Channel Emitter

SGM-15
15-Channel Emitter



• For emitters without setting button like RE05, press up button and stop button at the same time equal to setting button.



RE05
Portable Single Channel
Wall-Mounted Emitter



RE06
Portable Double Channel
Wall-Mounted Emitter

5 Attention



Far away water



Don't striking



Don't drilling



Preventing water intake during installation.



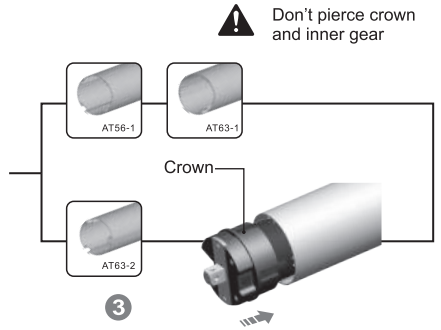
6 Crown Installation



1



2



Don't pierce crown and inner gear



Crown

3

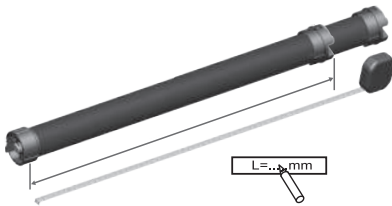
7 Drive Adapter Installation



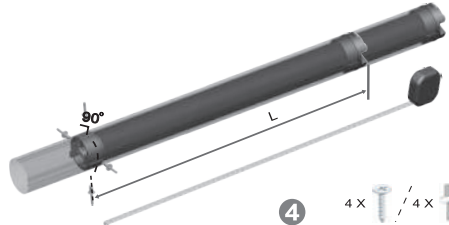
1



2



3



4

4 X / 4 X


When install the drive adapter could use rivet or screw spike

19 The Function List

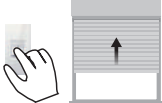
Function Type	Electronic Limit	Built-in Wireless Receiver	The Third Limit	Jogging & Tilt Function	Resistance And Stop Function	Resistance And Rebound To Up Limitation Function	Connect Single Key Rebound Mechanic Switch	
CM 35(45)E	✓	✓	✓	✓	✓			
CM 35(45)E/A	✓	✓	✓	✓		✓		
CM 35(45)E/B	✓	✓	✓	✓	✓		✓	
CM 35(45)E/C	✓	✓	✓	✓		✓	✓	

Function Type	Electronic Limit	Built-in Wireless Receiver	The Third Limit	Jogging & Tilt Function	Light Resistance And Stop Function	Light Resistance And Rebound To Up Limitation Function	Light Resistance And Rebound Half-cycle Function	Connect Single Key Rebound Mechanic Switch
CM 35(45)ED	✓	✓	✓	✓	✓			
CM 35(45)ED/A	✓	✓	✓	✓		✓		
CM35(45)ED/B	✓	✓	✓	✓			✓	
CM35(45)ED/C	✓	✓	✓	✓	✓			✓
CM35(45)ED/D	✓	✓	✓	✓		✓		✓
CM35(45)ED/E	✓	✓	✓	✓			✓	✓


17 Single-key rebound switch



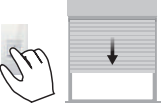
- Motor movement: up, stop, down, stop, repeat all the time.
- The switch will be invalid if motor not set up.




Press switch once,
motor run upward



Press switch once,
motor stop working





Press switch once,
motor run downward



Press switch once,
motor stop working

18 Limit head button function

Enter into setting state

→→



Press < 1s

→

OK

Enter into programming status
Need programming within 7s

The reverse of direction setting

→→

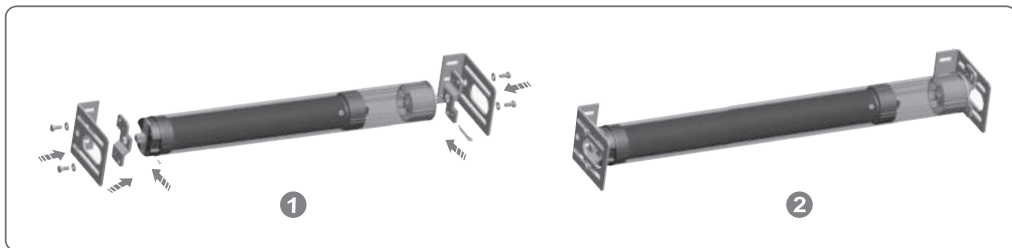
Motor continuous beep
three times, clockwise
and counter-clockwise
rotation as a hint

→

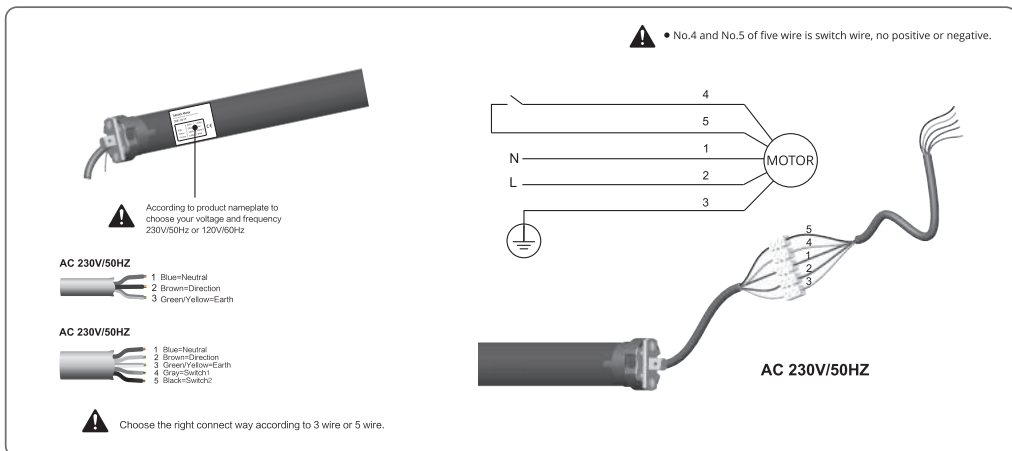
OK

Successful
change the direction

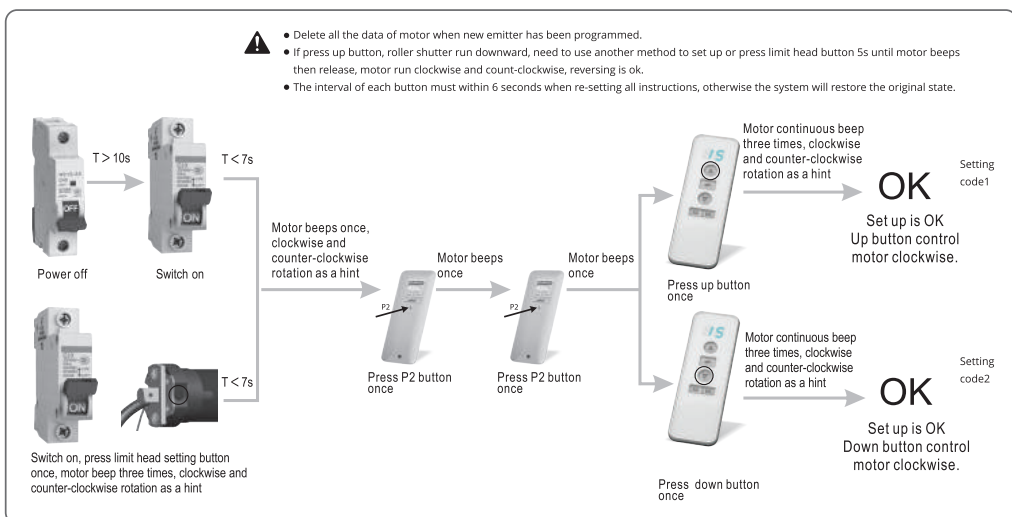
8 Bracket installation



9 Circuit installation



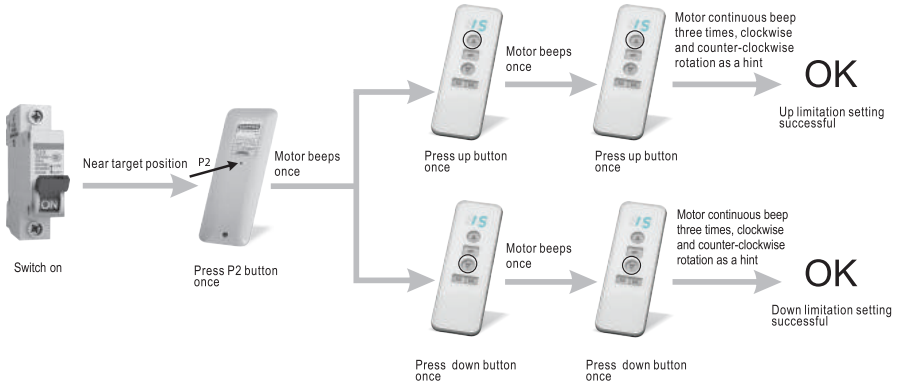
10 Setting up



11 Set the limitation



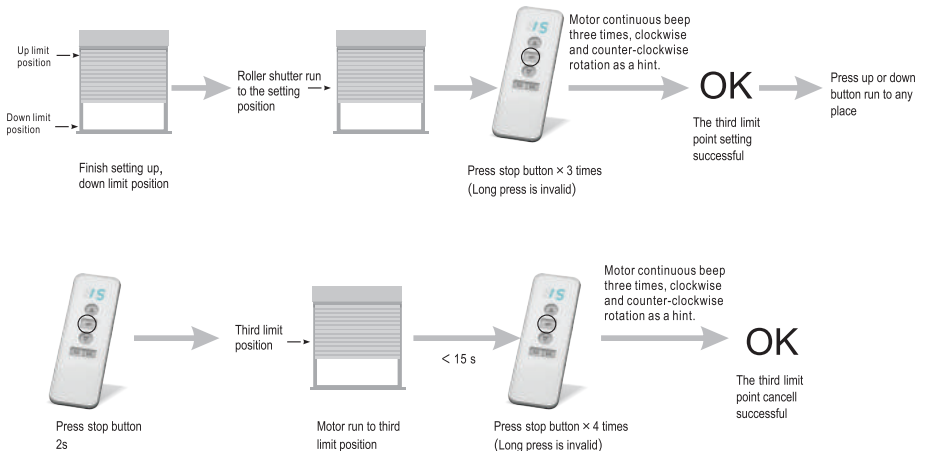
- Use emitter to control the motor reach target position.
- If want to set a more accurate limitation, can use Jogging & Tilt function setting(refer to No.16).
- The interval of each button must within 6 seconds when re-setting all instructions, otherwise the system will restore the original state.



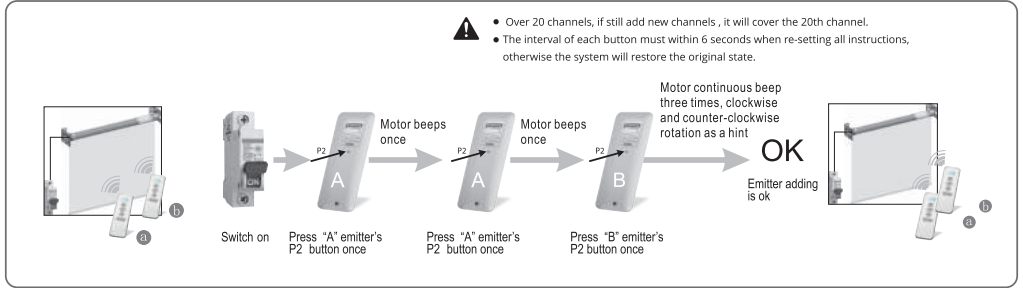
12 The third limit position setting and cancellation



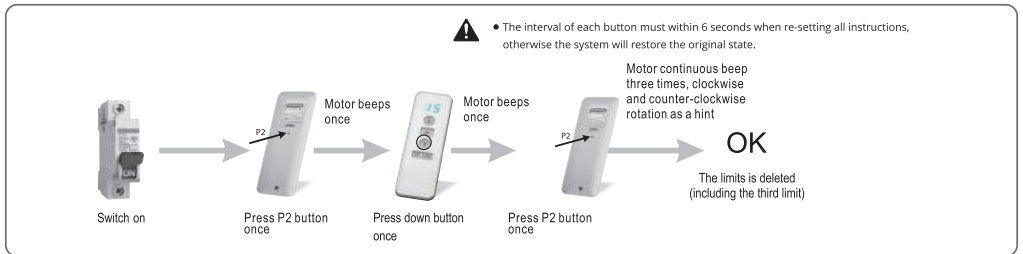
- Each time press stop button the interval should $\geq 1s$, otherwise the data will lose.
- The distance between up and down limit position must more than 30 cm, then can set the third limit.
- Press stop button 2s at any position, motor will reach to third limit automatic.
- The interval of each button must within 6 seconds when re-setting all instructions, otherwise the system will restore the original state.



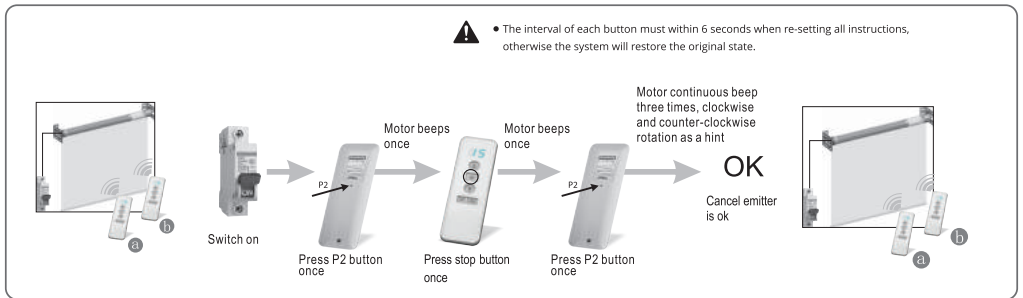
13 Add emitter



14 Delete up and down limit setting



15 Cancel emitter



16 Jogging & Tilt function setting

